

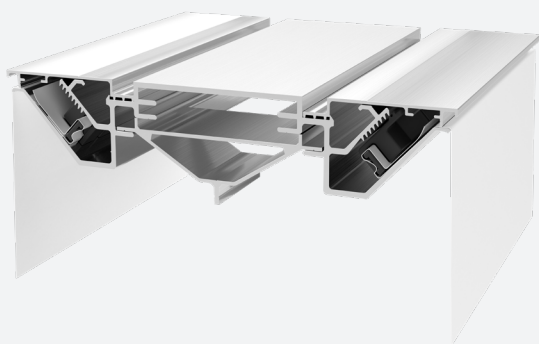
The majority of Flex Face signs are single-sided, but if you need a double-sided solution, then we have you covered.

Our 220mm depth option would typically be used for those unique, double-sided applications within larger projects and contracts

If making an impact is important for your project, then look no further than Econoflex.



220mm DETAILS



- Pairs with the famous Black Clip for ease of installation
- 220mm depth perfect for edge-illumination on a large-scale
- Bespoke internal supports for both strength and fixing points
- Can be built in sections for ease of transportation and installation
- Lengths available in 5.1m and 6.1m for more efficient manufacture
- Can be shaped to create lettering or match brand guidelines
- Channel designed to hide fixings and help with water run-off



Durable

Wind tested to hundreds of mph and zero system failures in over 30 years.

Sustainable

Reusable clips coupled with aluminium extrusions that are fully recyclable

Versatile

Lightweight and sleek yet super strong for large scale signs - can also be shaped.

Easy Assembly

No need for sewing, rods, clamps, eyelets or springs with our Black Clip System.

For more information, or for a bespoke quote, please contact us using the information below.