

# TELELINE T4

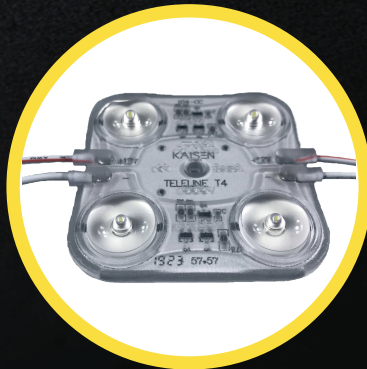
New generation of innovative solution for slim light boxes with a depth of 100-200mm.  
 Due to professional optics only 4 modules per square meter is enough for the uniform illumination.  
 Starting from the depth of 100 mm a distance between centers of modules - 400 mm.  
 At least 50% LESS modules and consumed power per square meter.  
 Equipped with new generation of high efficiency 3030 LED chip  
 White color option available: 6500K

## Specially designed for:

- Slim light boxes
- Recommended installation depth 100-200 mm

## Features:

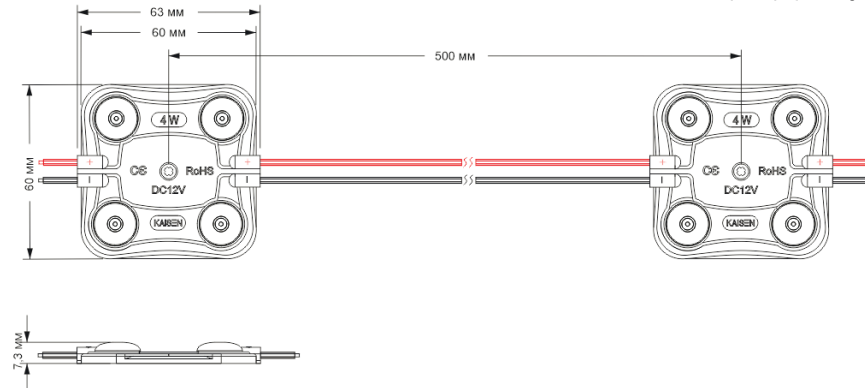
- The smallest quantity of modules per square meter on the market !
- Power consumption is only 16 W per square meter.
- System efficiency up to 95 lm/W
- Maximum Tj temperature <80 °C
- LM80 international certificate for LEDs
- Aluminium PCB and special thermal tape
- High protection level of IP67
- Fire protection level - V2
- Light decay < 30% after 60,000 hrs
- CRI > 82
- 5 years warranty



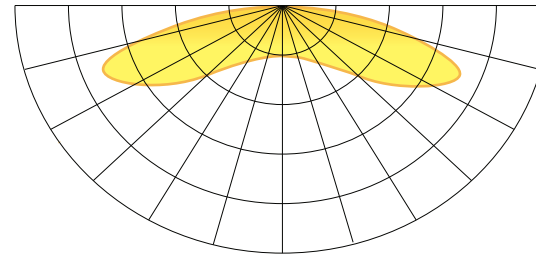
[www.kaisenelectric.com](http://www.kaisenelectric.com)



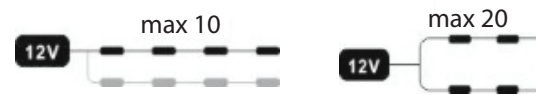
## Dimensions



## Light distribution graph



Beam angle: 175°



# KAISEN

## Technical information

Colors available :	<input type="radio"/>
Power	4 W
Light output	380 lm
LED type	3030
Input	12VDC
Color temperature	<input type="radio"/> 6500 K
Beam angle	175°
Protection level	IP 67
Working temperature	-30 +50 °C

## Packing information

Packing type	Chain	Package	Box
Quantity	10 pcs	50 pcs	400 pcs
Weight	0.5 kg	2.5 kg	20.3 kg

## Illumination table

Installation depth	Distance between centers	Quantity per 1 sq m	Power per 1 sq m
100 mm	400 mm	6 pcs	24 W
120 mm	500 mm	4 pcs	16 W
140 mm	500 mm	4 pcs	16 W
150 mm	500 mm	4 pcs	16 W
200 mm	500 mm	4 pcs	16 W